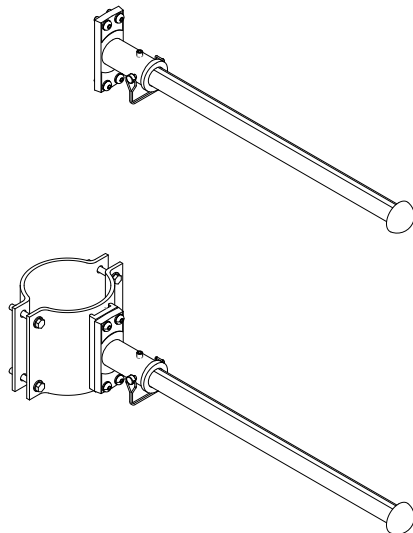


Catalog Number	
Notes	Type

BA

Aluminum Banner Arms



General Description

The banner arm is designed to allow the mounting of decorative or informational banners onto a pole shaft. Four nominal sizes of banner arm are available and can be provided as bolt-on or clamp-on mounting styles. Eyebolts and decorative scrolls are optional.

Note: Banner arms can add substantial wind loading to the post you select. Please coordinate the correct post size and style with the factory. Also, arms are not designed for pedestrian interference. Banners to be provided by others.

Construction

- The bolt-on and Sitelink banner arms shall be two piece construction.
- The bolt-on and Sitelink banner arms shall consist of a cast aluminum coupling and a round banner arm with finial.
- The clamp-on banner arms shall consist of a clamping plate with provision and a standard bolt-on banner arm mounted to it.
- All banner arms are attached to the coupling using a stainless steel latch pin for easy removal.
- All welding shall be per ANSI/AWS D1.2-90.
- All welders shall be certified per ANSI/AWS D1.2-90 Section 5.

Materials

- The arm itself shall consist of aluminum 6061 schedule 80 pipe or extrusion.
- The bolt-on coupling shall be ASTM 356 alloy per ASTM B-179 or ASTM B26.
- The clamp-on mounting plate shall be 6061 aluminum plate with a 6061 provision welded to it.
- The finial shall be ASTM 356 alloy per ASTM B-179 or ASTM B26 and welded to the end of the banner arm.
- All hardware shall be stainless steel.

Finish

- Utilize a polyester powder coat paint to ensure maximum durability.
- Rigorous multi-stage pre-treating and painting process yields a finish that achieves a scribe creepage rating of 8 (per ASTM D1654) after over 5,000 hours exposure to salt fog chamber (operated per ASTM B117) on standard and RAL finish options.
- RAL (RALxxxxSDCR) paint colors are Super Durable Corrosion Resistant, 80% gloss.

Installation

- The bolt-on banner arm shall bolt to a mounting channel on the side of the post with four stainless steel screws.
- The Sitelink flagpole holders shall bolt to a channel on the Sitelink shaft using included two bolts and Tracnuts.
- The clamp-on mounting shall clamp around the post, secured with four 3/8" hex head bolts. (Post diameter at mounting point must be specified).
- The banner arm shall mount into the coupling and be secured by a 1/4" stainless steel latch pin.

Dimensions

- Banner arms are available in various arm diameters and lengths. Nominal arm diameters are 0.75", 1.00", 1.25" and 1.50".
- Available lengths are shown in the Ordering Information.

Warranty

1-year limited warranty. This is the only warranty provided and no other statements in this specification sheet create any warranty of any kind. All other express and implied warranties are disclaimed. Complete warranty terms located at: www.acuitybrands.com/support/warranty/terms-and-conditions

Note: Actual performance may differ as a result of end-user environment and application. Specifications subject to change without notice.

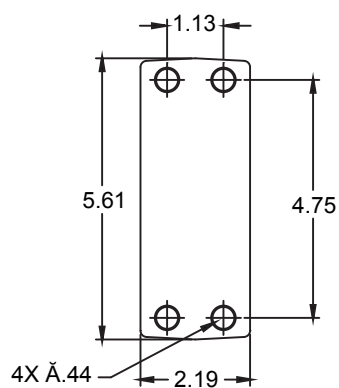
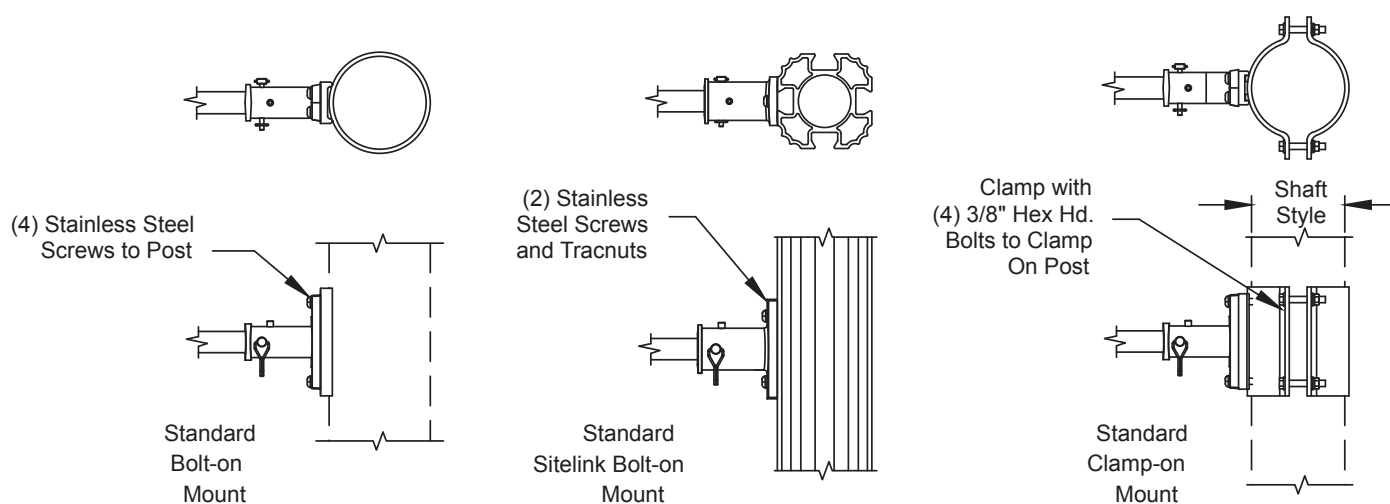
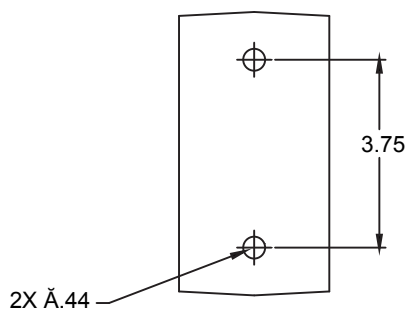
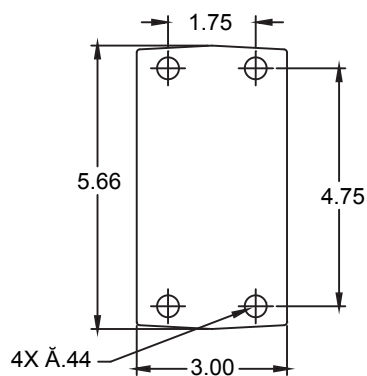
ORDERING INFORMATION

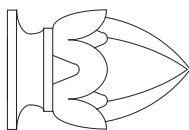
Example: BA 24IN 1A B0 F5J 100P

Series		Arm Length		Number of Arms		Mount		Shaft Style		Finial	
BA	Standard Aluminum Banner Arm	12IN	12 Inches	1A	Single arm	B0 ¹	Bolt on banner, single arm	<u>Fluted Shaft:</u>		AC	Acorn
		14IN	14 Inches	2A	Double arm, 2 single arms at 180 degrees	CO ²	Clamp on banner arm	F4C	4" diameter fluted, .125 wall	BL	Ball
		16IN	16 Inches					F4J	4" diameter fluted, .25 wall	HB	Half Sphere
		18IN	18 Inches					F5J	5" diameter fluted, .25 wall	RL	Raleigh
		19IN	19 Inches					<u>Fluted Tapered Shaft:</u>			
		20IN	20 inches					FTB	Steel, .1196 wall		
		21IN	21 inches					FTJ	Aluminum, .25 wall		
		22IN	22 inches					FTM	Aluminum, .125 wall		
		23IN	23 inches					FTN	Iron, .125 wall		
		24IN	24 inches					<u>Octagonal Shaft:</u>			
		25IN	25 inches					OTJ	Tapered, .25 wall		
		26IN	26 inches					OTN	Tapered, .375 wall		
		27IN	27 inches					O4C	Fluted, .125 wall		
		28IN	28 inches					<u>Smooth Shaft:</u>			
		29IN	29 inches					S4C	4" diameter smooth, .125 wall		
		30IN	30 inches					S4J	4" diameter smooth, .25 wall		
		31IN	31 inches					S5J	5" diameter smooth, .25 wall		
		32IN	32 inches					<u>SiteLink:</u>			
		33IN	33 inches					SL4	4.50" fluted, .156 wall		
		34IN	34 inches					SL5	5.25" fluted, .25 wall		
		35IN	35 inches					SL6	5.75" fluted, .25 wall		
		36IN	36 inches					SL8	8.50" fluted, .188 wall		
NOTES: 1. 1A only. 2. Not available with Fluted Tapered, Octagonal Tapered, Octagonally Fluted or SiteLink Shaft Styles.								ST2	5.75" extruded, .25 wall		
								ST3	8.50" extruded, .22 wall		
								<u>Tapered Shaft:</u>			
								T4C	3" to 4" Tapered, .125 wall		
								T5C	3" to 5" inch Tapered, .125 wall		

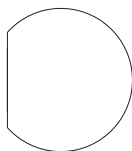
Banner Pipe Size		Color	Options
075P	.75 SCH PIPE (1.05" actual)	BK Black	SEB ³ Single eye bolt on each arm. Standard eye bolt is located 3" from finial end of pipe. For 1" banner only, the slotted channel is designed for variable eye bolt location.
100P	1.00 SCH PIPE (1.315" actual)	BZ Bronze	SCR ⁴ Scroll Attachment
125P	1.25 SCH PIPE (1.66 actual)	CMC Customer matching color	DEB ⁵ 2 eye bolts on each arm. Standard eye bolts are located 3" from each end of pipe. For 1" banner only, the slotted channel is designed for variable eye bolt location.
150P	1.50 SCH PIPE (1.90 actual)	CTBS Standard color to be selected	NOTES: 3. Not available with DEB or SCR options. Only available with 100P Banner Pipe Size Option. 4. Not available with 12IN thru 19IN arm lengths. 5. Not available with SEB or SCR options. Only available with 100P Banner Pipe Size Option.
		DB Dark Blue	
		GN Green	
		GH Graphite	
		GR Gray	
		PP Prime Painted	
		RALxxxxSDCR RAL Super Durable Corrosion Resistant, 80% Gloss Paint, replace xxxx with RAL number.	
		SL Silver	
		WH White	

MOUNTING DETAILS

075P AND 100P BANNER ARM
BASE DETAILSSITELINK BANNER ARM
BASE DETAILS125P AND 150P BANNER ARM
BASE DETAILS



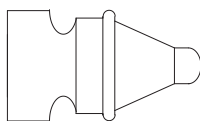
AC = Acron



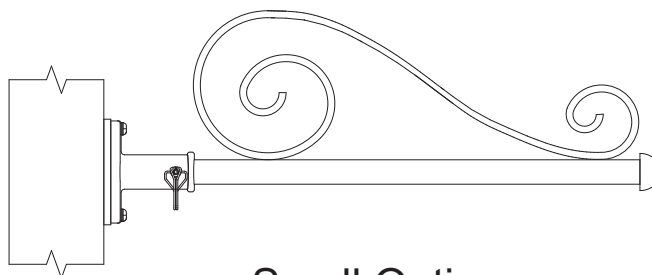
BL = Ball



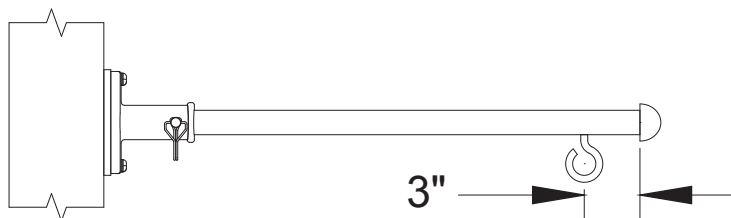
HB = Half Sphere



RL = Raleigh



Scroll Option



Eye Bolt Option